



Frisco- Ruby Jack Connection

2025: The Year We Break Ground



Overview

Benefits



City connectivity



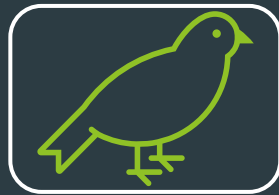
Wetlands adjacent



New bridge



Future recreation opportunities



Open habitat vistas

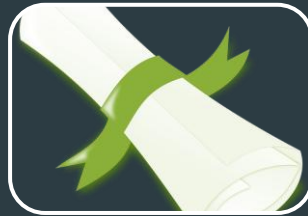
Challenges



No railbed



No suitable structure over center creek



Right of way



In watershed



Environmental Review



\$\$



Construction plan

Notable features

6 phases of construction

3 new parking areas

3.78 miles

Leverages existing pathways where feasible

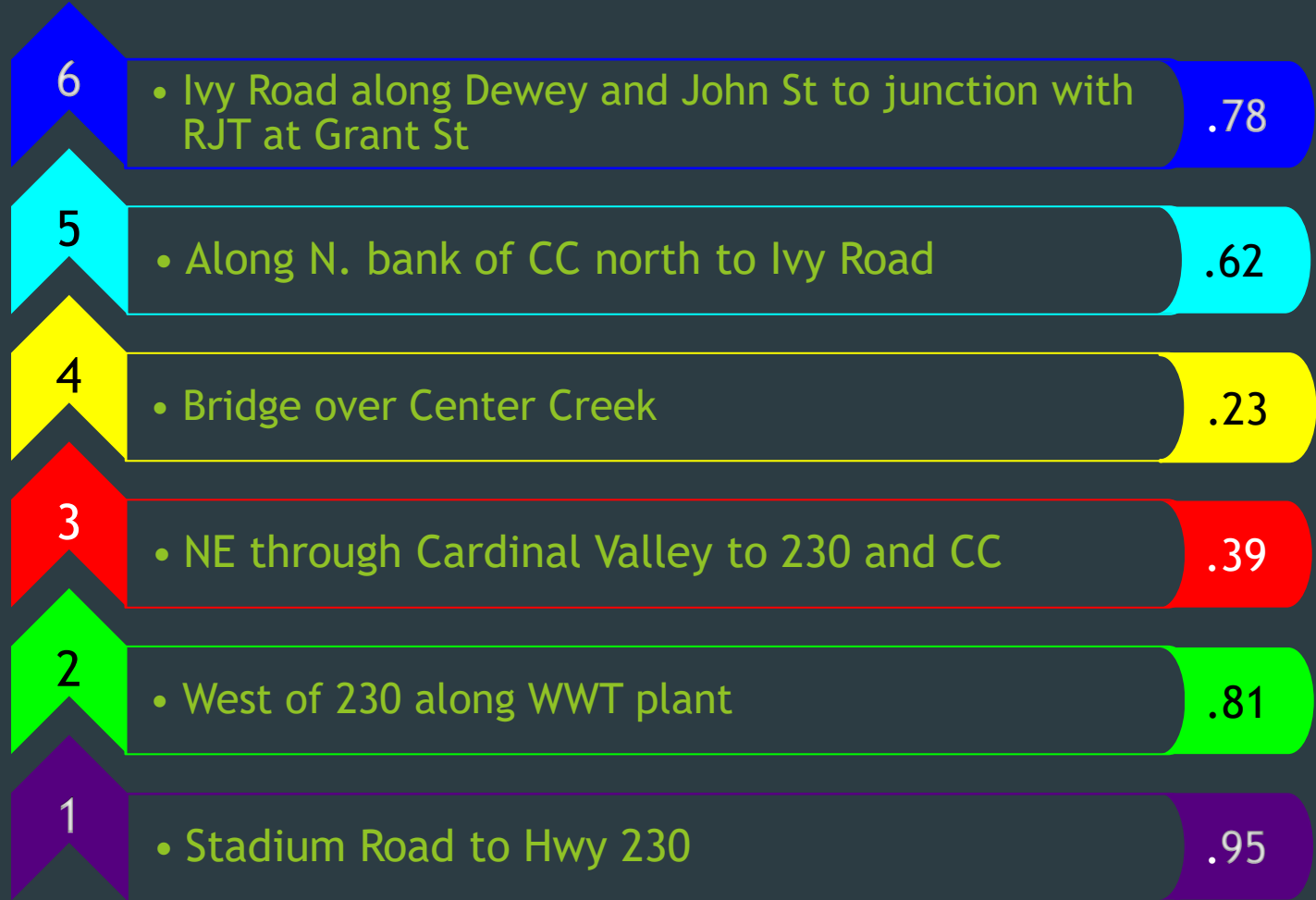
Groundbreaking on Phase 2 Spring 2025



North

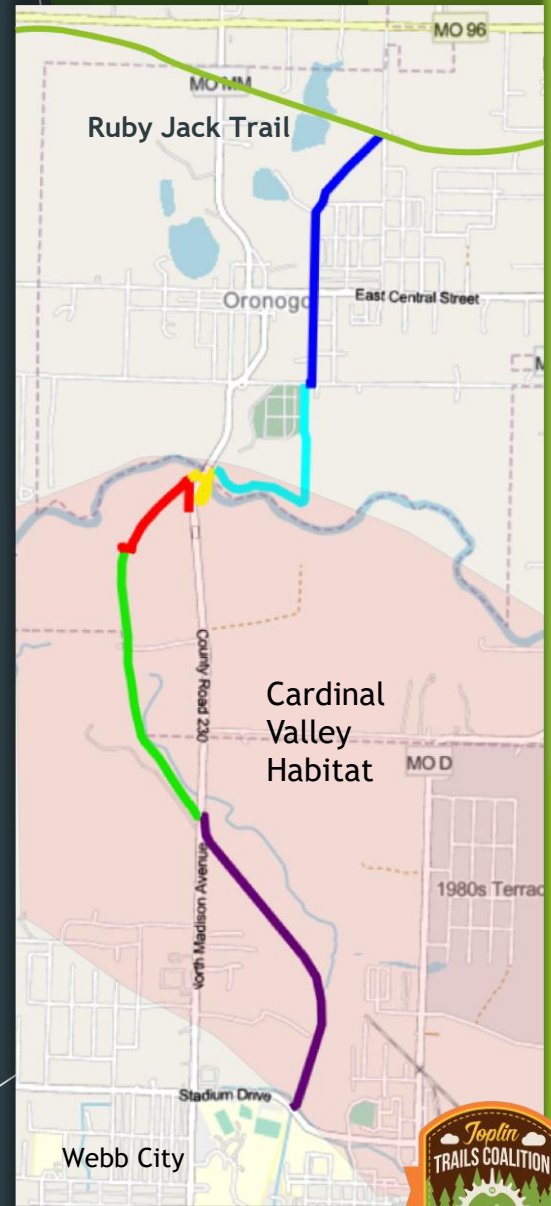


South



Distance

Phase Overview



Cardinal Valley Habitat

John Nichols, Manager
Missouri Dept. of Conservation
Missouri DNR
US Fish & Wildlife Service



6 Phases of construction

1 Phase 1
0.76 mile
Stadium Road to Hwy 230

CR 230 (Madison)

Stadium Drive

2 Phase 2
0.81 mile
West of 230 along WWT plant

CR 230

Parking

Spring 2025

Initial Phase

Least expensive

3 Phase 3
0.37 mile
HE through Cardinal Valley to 230 and Center Creek

Cardinal Valley

CR 230

4 Phase 4
0.23 mile
Bridge over Center Creek

Trail under bridge

Bridge

5 Phase 5
0.43 mile
Along north bank of Center Creek north to Hwy Road

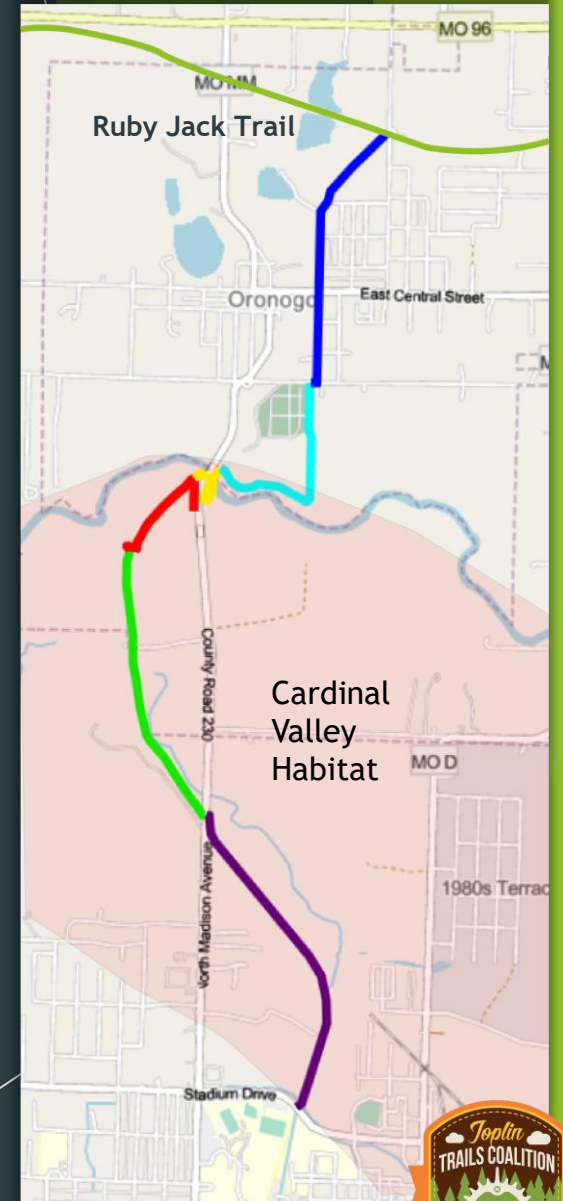
Rejected Route

- REJECTED - Route through flood plain west side of Orange Cemetery
- Alternate routes under consideration

6 Phase 6
0.73 mile
Streets of Oronogo

Ruby Jack Trail at Grant St

Hwy Road



1

Phase 1

0.95 miles

Stadium Road
to Hwy 230

CR 230
(Madison)



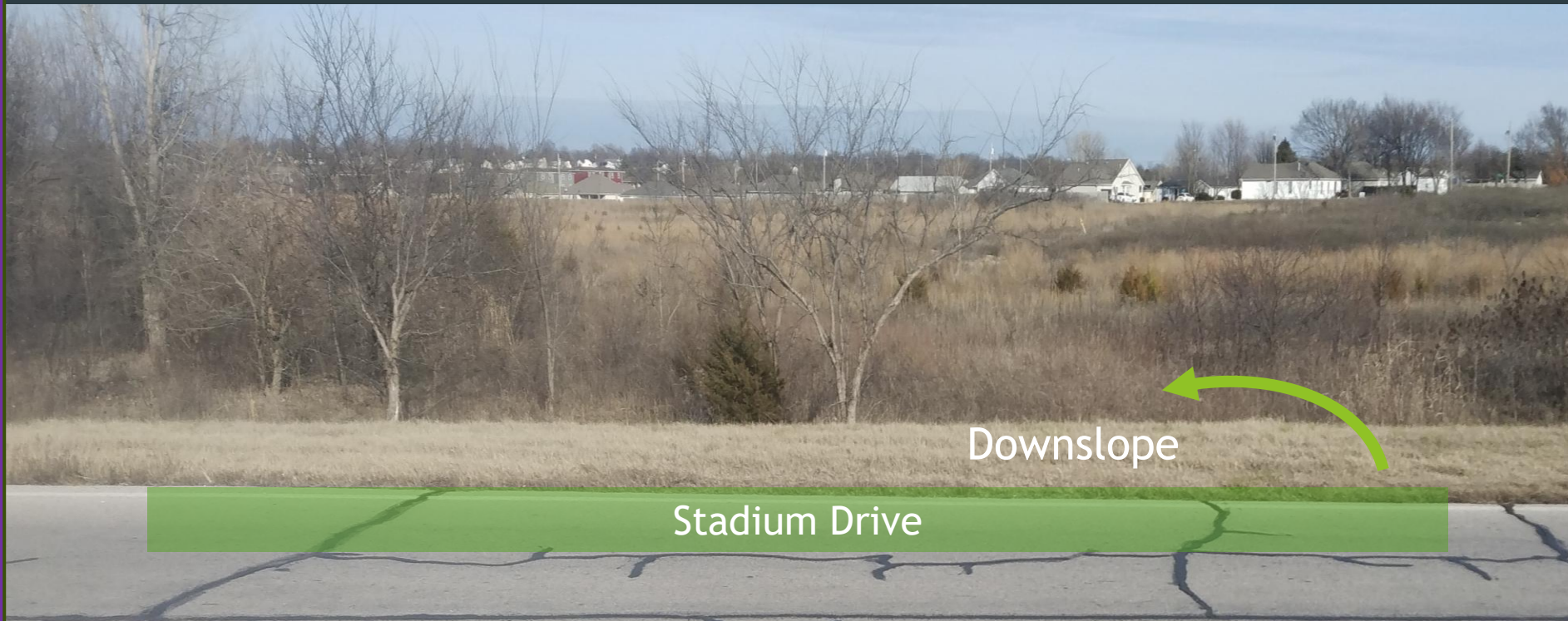
Stadium
Drive



North of Stadium Drive

East of Tennis Courts and Shared Parking

1



Stadium Drive

Downslope



Looking Northwest

Lowlands need building up



Looking west



1



Creek



Culvert support required

Level Ground- Open views



Land composted for habitat restoration



At CR 230-Jct with Phase 2

Proposed Parking area



1



2



CR 230

Parking

Phase 2

0.81 mile

West of 230 along WWT plant

 Spring 2025

 Initial Phase

 Least expensive

Parking



2



NNW - in the direction of ponds



Following the original rail line



Between the ponds

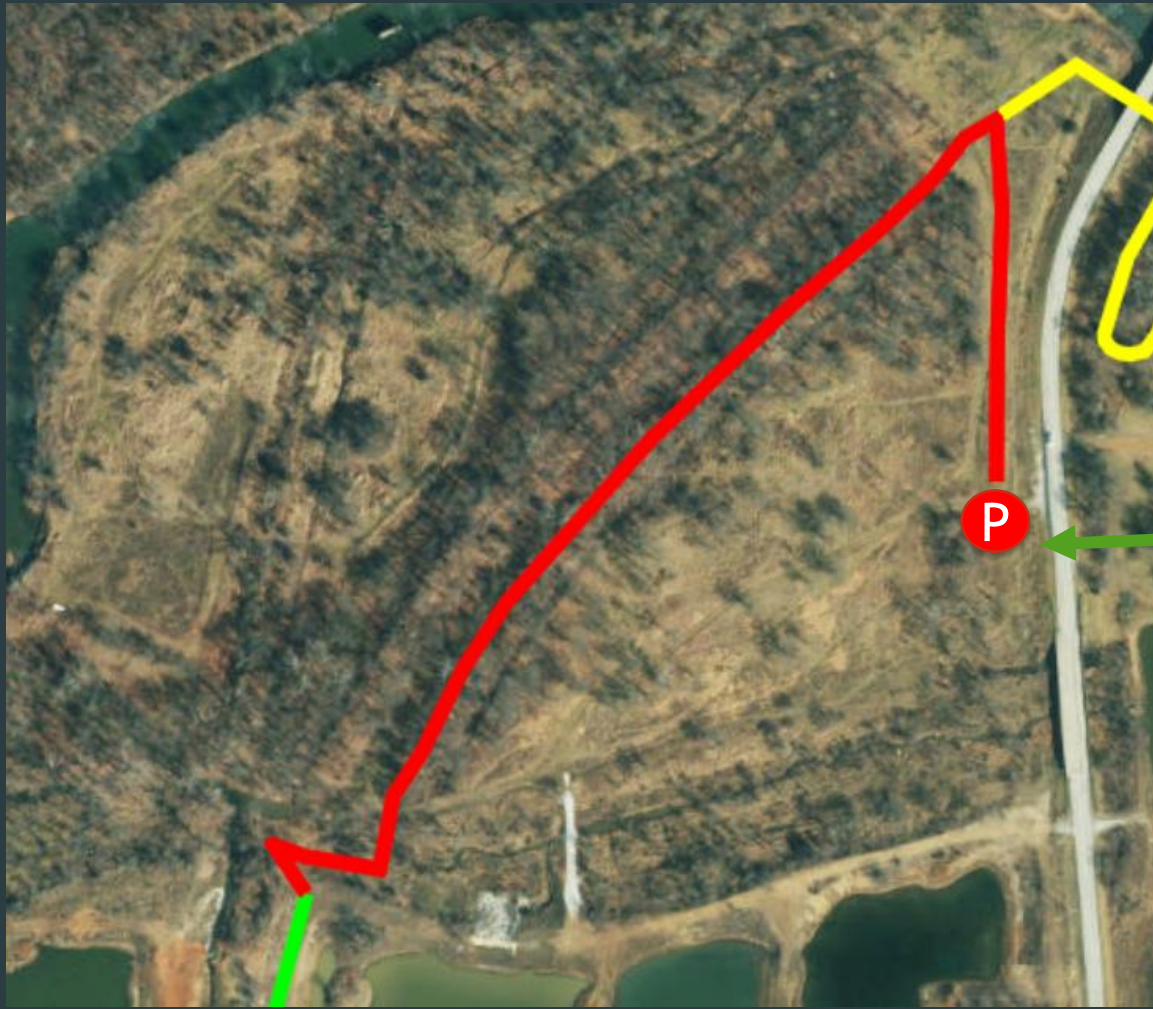
2



Phase 3

0.39 mile

NE through Cardinal Valley to 230 and Center Creek



Cardinal Valley Parking

CR 230



3



Creek crossing

Culvert installation necessary



3



On berm above flood plain



3



Towards Center Creek

Lowlands require concrete



3



CR 230 Bridge

Trail passes under car bridge



Trail under bridge

Bridge



Phase 4

0.23 mile

Bridge over Center Creek



Cloverleaf path south to bridge

4



4



Center Creek Bridge

North end





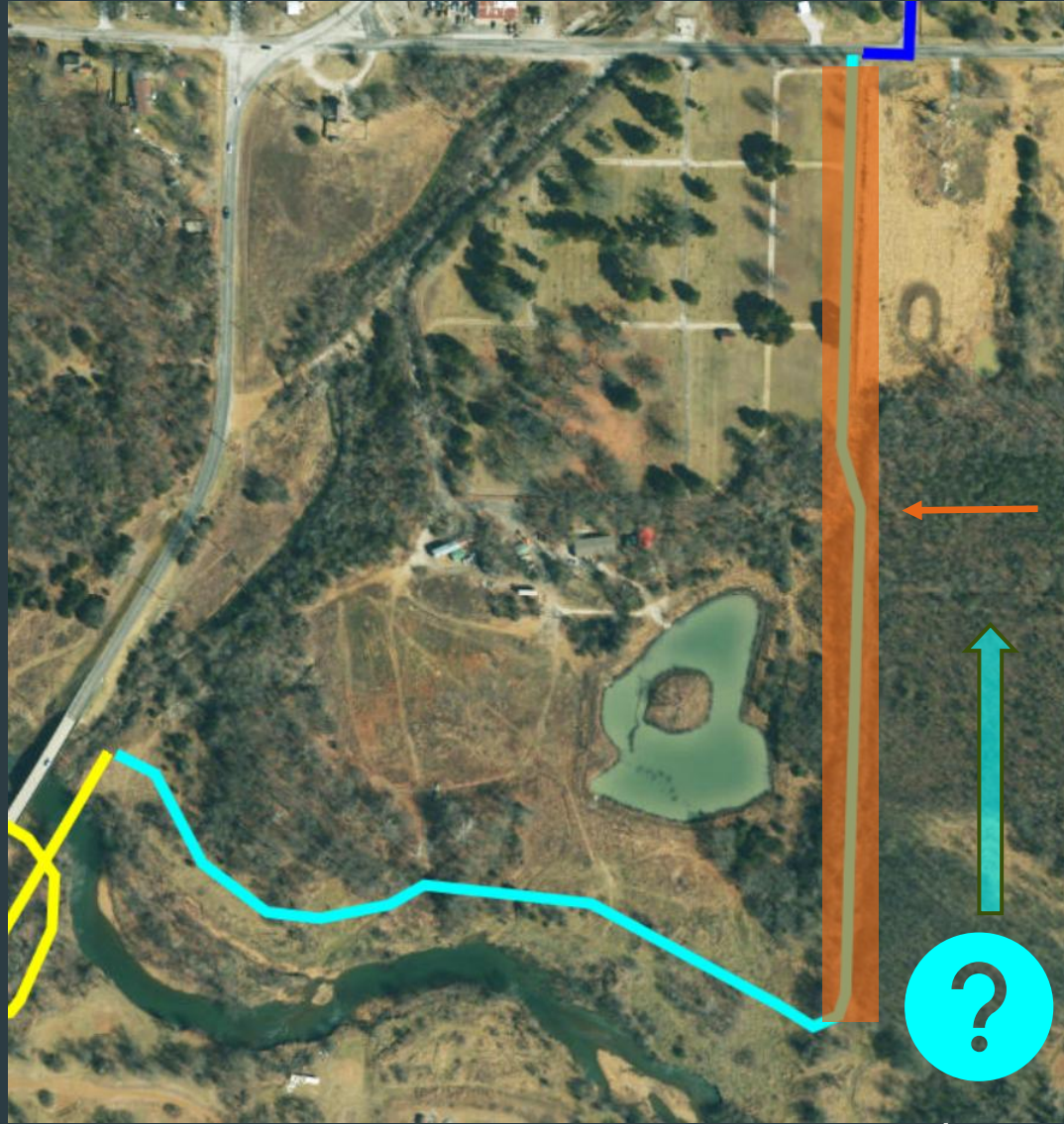
Phase 5

0.62 mile

Along north bank of Center Creek north to Ivy Road

5

- ▶ REJECTED : North through forest then east side of Oronogo Cemetery
- ▶ Alternate routes under consideration



Rejected Route



5



Looking East
In flood plain



Northward Bend

northward route undetermined as yet

5



Northward turn

5



Exact route still uncertain
In flood plain → concrete





6

Temporary re-route

Ruby Jack Trail at Grant St

Ivy Road

Phase 6

0.78 mile
Streets of Oronogo



6



North on Dewey St

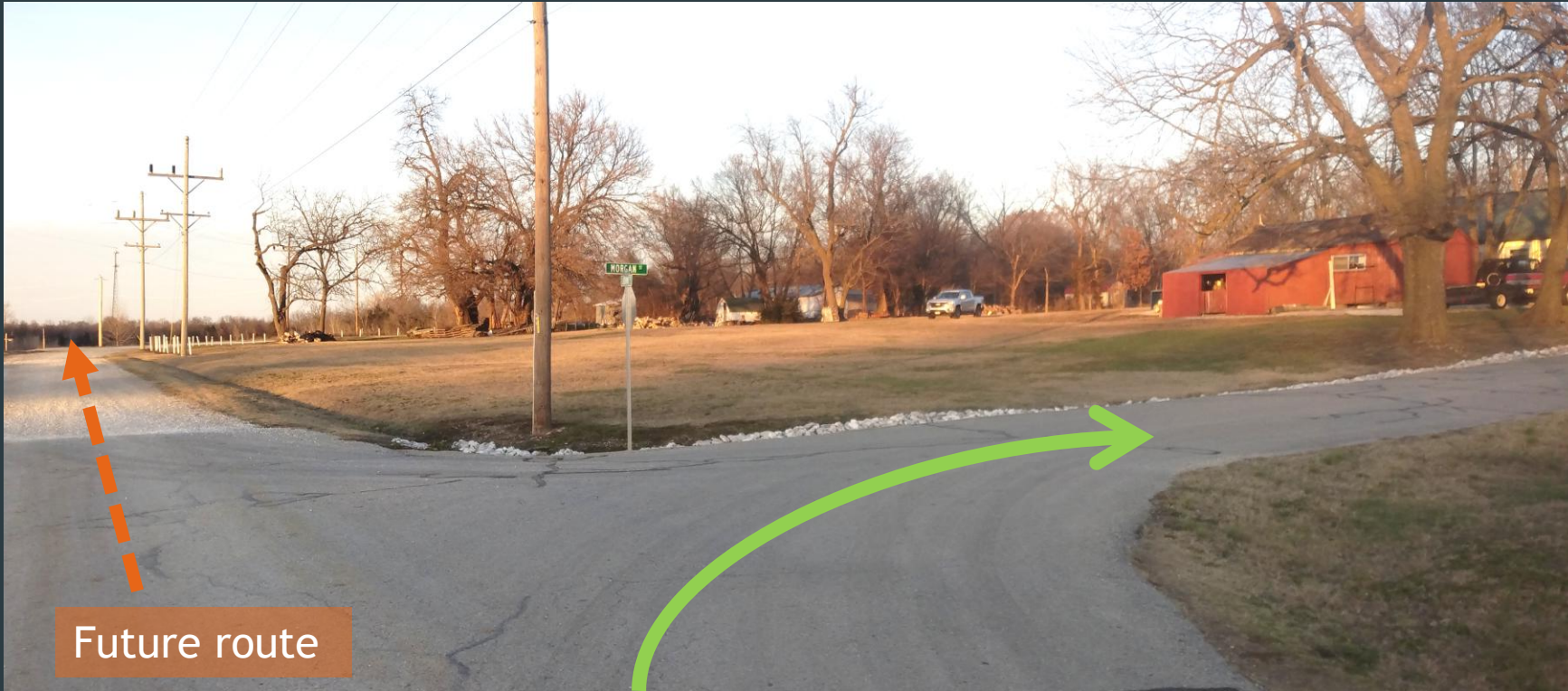


North on John St

6



6



Future route

East on Morgan

Temporary route. Permanent future route goes north.



6



North on Grant

Temporary route



6



Ruby Jack Trail

Route will be signposted



Remaining challenges



Right of way



Fundraising



Grant approval
contingent





Thank you for your continued support!





Resources



[Frisco-Ruby Jack
Connector Trail Project
- Joplin Trails Coalition](#)



[Facebook Page](#)



[Volunteer Group](#)



[Contribute - Joplin
Trails Coalition](#)



[Cardinal Valley Prairie
and Wetland
Restoration](#)



[Joplin GIS cycling](#)